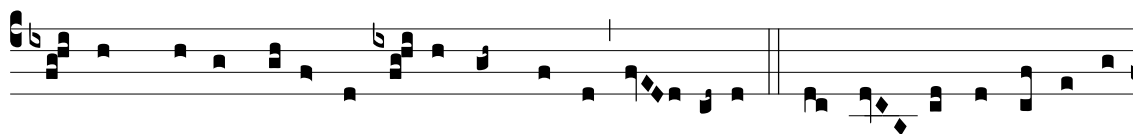


CLEMENS RECTOR

I.

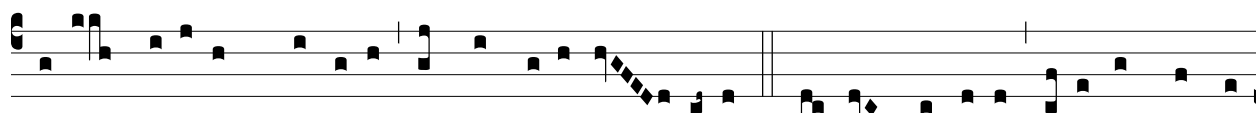
C



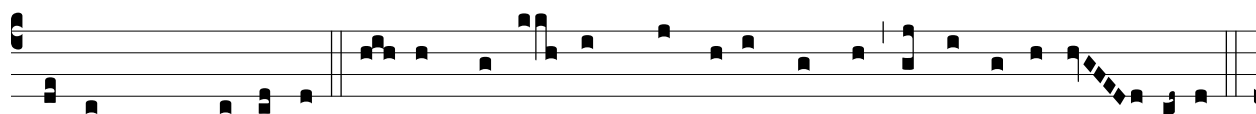
le-mens Rector, aeterne Pa-ter, imménse, e- léison. Nostras necne vo-ces e-



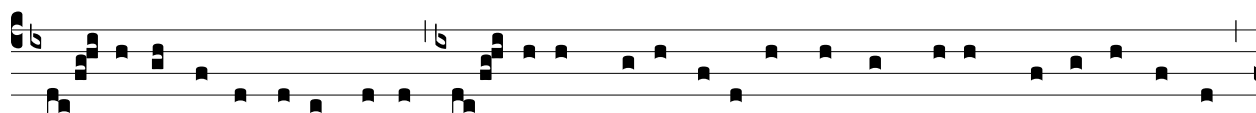
xáudi, bene-dícté Dómi-ne. Aether stél-li-fer noster, nostri be-nígne e- léison. Ple- bem



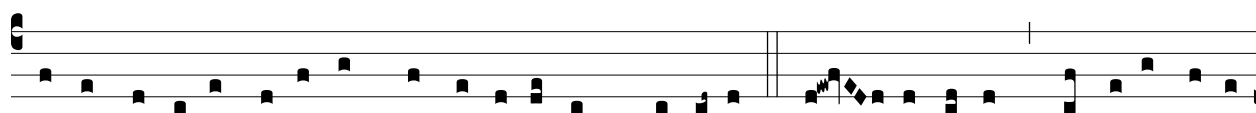
tu-am, Sába-oth Há-gi- e, semper rege, e- léison. Tri-ne et une, sédu-las nostras



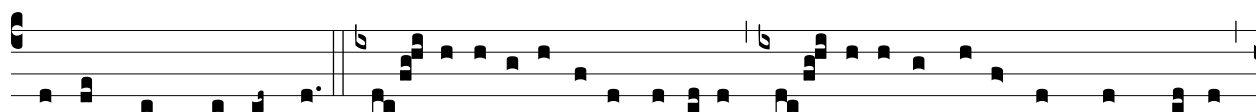
pre-ces, Rex, súsci-pe. Fi- dem auge his, qui credunt in te, tu succúrre, e- léison.



Ré- spi-ce no-bis, o Incly-te, fer opem de excélsis et nostras, Redémptor orbis terrae,



vo-ces iu-gi Ange-ló-rum cármí-ni adiúnge, e-léison. Cun- ctí-po-tens, sophí-ae tu-ae



lumen no-bis infúnde. Tri- pertí-te et une Ký-ri- e, qui manes in aetérnum cum Patre,



te o-re, te corde atque mente, psál-limus nunc ti-bi, o be-á-te Je-su bone, te pre-cámur

